

# **Attachment A2**

**Selected Drawings**



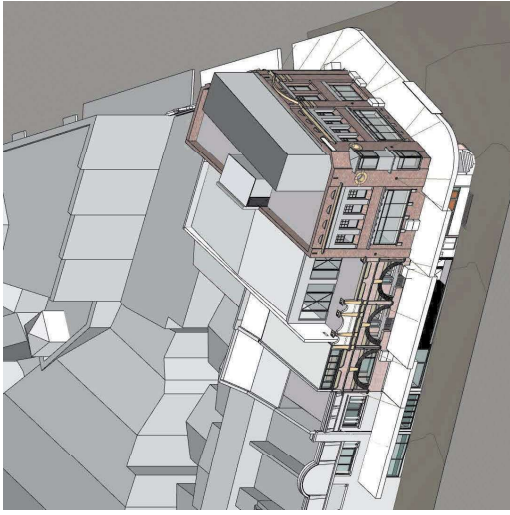
2 JUNE 21 9AM - EXISTING  
1/200



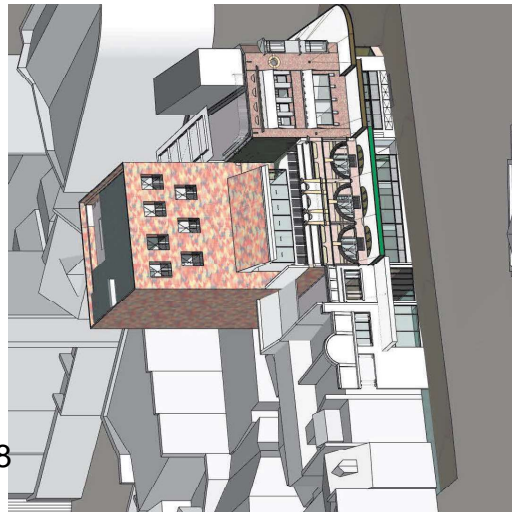
4 JUNE 21 10AM - EXISTING  
1/200



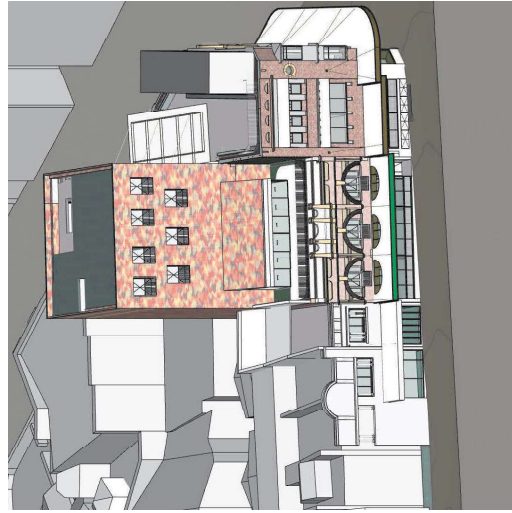
5 JUNE 21 11AM - EXISTING  
1/200



6 JUNE 21 12PM - EXISTING  
1/200



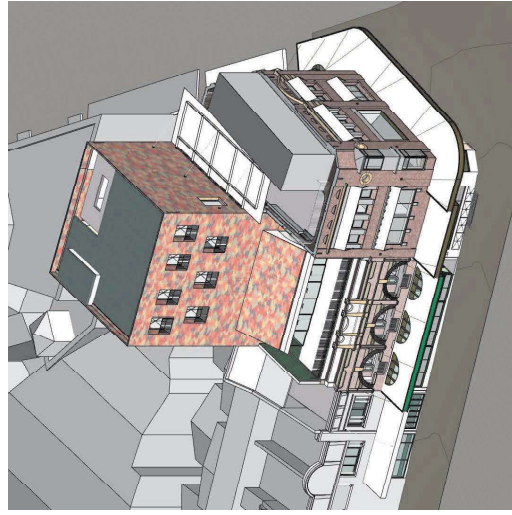
3 JUNE 21 9AM - PROPOSED  
1/200



7 JUNE 21 10AM - PROPOSED  
1/200



8 JUNE 21 11AM - PROPOSED  
1/200



9 JUNE 21 12PM - PROPOSED  
1/200

© 2011 NEESON MURCUTT & NEILLE  
 ALL RIGHTS RESERVED  
 NEESON MURCUTT & NEILLE ARCHITECTS, P.L.L.C.  
 1119 KENNETH PATRICK DRIVE, SUITE 200  
 FORT WORTH, TEXAS 76104  
 TEL: 817.335.1111  
 WWW.NEESONMURCUTT.COM

LEGEND

EXISTING	EXISTING	EXISTING	EXISTING
NEW	NEW	NEW	NEW
REMOVED	REMOVED	REMOVED	REMOVED
...	...	...	...

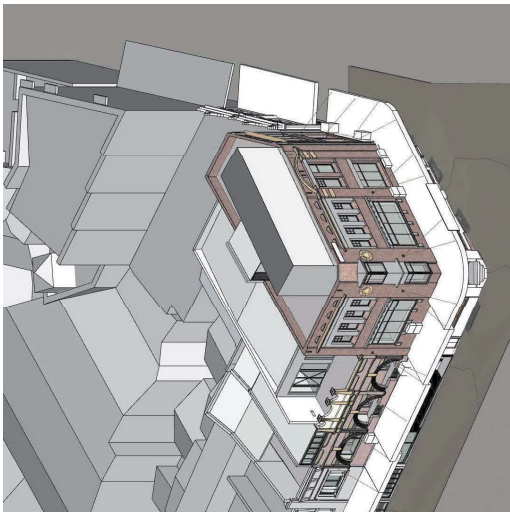
REVISION

NO.	DATE	DESCRIPTION
01	7/4/22	DATE
02	7/4/22	DATE

**NEESON MURCUTT & NEILLE**  
 NEESON MURCUTT ARCHITECTS, P.L.L.C.  
 1119 KENNETH PATRICK DRIVE, SUITE 200  
 FORT WORTH, TEXAS 76104  
 TEL: 817.335.1111  
 WWW.NEESONMURCUTT.COM

**DA 07/01** SOLAR DIAGRAMS JUNE 21  
 SCALE: 8/1  
 DATE: 7/14/22

Copyright in all documents and drawings prepared by NEESON MURCUTT ARCHITECTS and in any work executed from those documents and drawings shall remain the property of, or an invention of, NEESON MURCUTT ARCHITECTS, P.L.L.C.



1 JUNE 21 1PM - EXISTING  
1/200



2 JUNE 21 2PM - EXISTING  
1/200



6 JUNE 21 3PM - EXISTING  
1/200



4 JUNE 21 1PM - PROPOSED  
1/200



5 JUNE 21 2PM - PROPOSED  
1/200



3 JUNE 21 3PM - PROPOSED  
1/200

© 2018 NEESON MURCUTT + NEILLE  
 ALL RIGHTS RESERVED  
 NEESON MURCUTT + NEILLE ARCHITECTS PTY LTD  
 11-9 ROBINET PLACE, SYDNEY NSW 2011  
 T: 61 2 9550 9700  
 F: 61 2 9550 9701  
 WWW.NEESONMURCUTT.COM.AU  
 NEESON MURCUTT + NEILLE ARCHITECTS PTY LTD  
 11-9 ROBINET PLACE, SYDNEY NSW 2011  
 T: 61 2 9550 9700  
 F: 61 2 9550 9701  
 WWW.NEESONMURCUTT.COM.AU

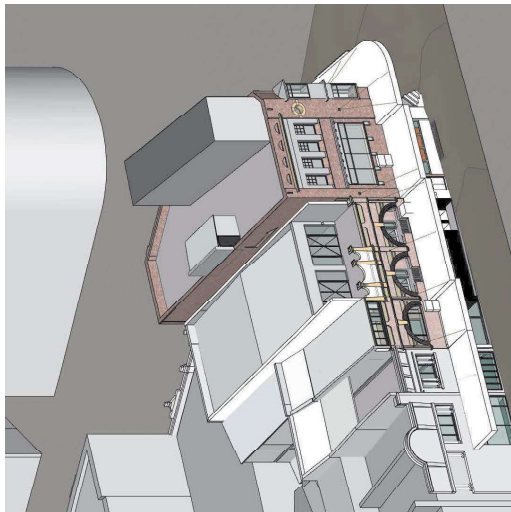
REVISIONS

NO.	DATE	DESCRIPTION
01	7/4/22	DATE
02	7/4/22	DATE
03	7/4/22	DATE
04	7/4/22	DATE
05	7/4/22	DATE
06	7/4/22	DATE
07	7/4/22	DATE
08	7/4/22	DATE
09	7/4/22	DATE
10	7/4/22	DATE
11	7/4/22	DATE
12	7/4/22	DATE
13	7/4/22	DATE
14	7/4/22	DATE
15	7/4/22	DATE
16	7/4/22	DATE
17	7/4/22	DATE
18	7/4/22	DATE
19	7/4/22	DATE
20	7/4/22	DATE
21	7/4/22	DATE
22	7/4/22	DATE
23	7/4/22	DATE
24	7/4/22	DATE
25	7/4/22	DATE
26	7/4/22	DATE
27	7/4/22	DATE
28	7/4/22	DATE
29	7/4/22	DATE
30	7/4/22	DATE
31	7/4/22	DATE
32	7/4/22	DATE
33	7/4/22	DATE
34	7/4/22	DATE
35	7/4/22	DATE
36	7/4/22	DATE
37	7/4/22	DATE
38	7/4/22	DATE
39	7/4/22	DATE
40	7/4/22	DATE
41	7/4/22	DATE
42	7/4/22	DATE
43	7/4/22	DATE
44	7/4/22	DATE
45	7/4/22	DATE
46	7/4/22	DATE
47	7/4/22	DATE
48	7/4/22	DATE
49	7/4/22	DATE
50	7/4/22	DATE
51	7/4/22	DATE
52	7/4/22	DATE
53	7/4/22	DATE
54	7/4/22	DATE
55	7/4/22	DATE
56	7/4/22	DATE
57	7/4/22	DATE
58	7/4/22	DATE
59	7/4/22	DATE
60	7/4/22	DATE
61	7/4/22	DATE
62	7/4/22	DATE
63	7/4/22	DATE
64	7/4/22	DATE
65	7/4/22	DATE
66	7/4/22	DATE
67	7/4/22	DATE
68	7/4/22	DATE
69	7/4/22	DATE
70	7/4/22	DATE
71	7/4/22	DATE
72	7/4/22	DATE
73	7/4/22	DATE
74	7/4/22	DATE
75	7/4/22	DATE
76	7/4/22	DATE
77	7/4/22	DATE
78	7/4/22	DATE
79	7/4/22	DATE
80	7/4/22	DATE
81	7/4/22	DATE
82	7/4/22	DATE
83	7/4/22	DATE
84	7/4/22	DATE
85	7/4/22	DATE
86	7/4/22	DATE
87	7/4/22	DATE
88	7/4/22	DATE
89	7/4/22	DATE
90	7/4/22	DATE
91	7/4/22	DATE
92	7/4/22	DATE
93	7/4/22	DATE
94	7/4/22	DATE
95	7/4/22	DATE
96	7/4/22	DATE
97	7/4/22	DATE
98	7/4/22	DATE
99	7/4/22	DATE
100	7/4/22	DATE

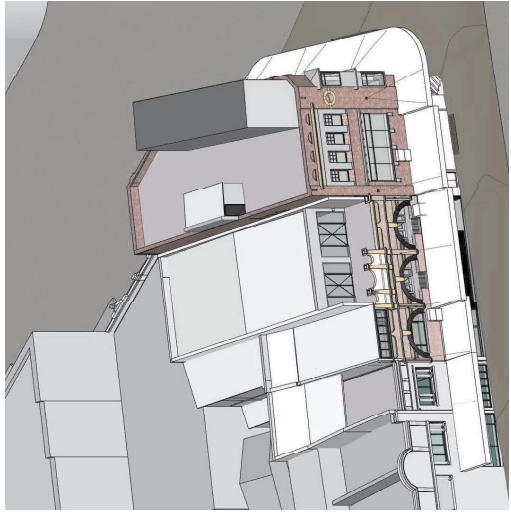
DATE: 7/4/22  
 DRAWN BY: JH  
 CHECKED BY: JH  
 PROJECT: 2021-001  
 SHEET: 01  
 SCALE: 1/200  
 DATE: 7/4/22

NEESON MURCUTT + NEILLE  
 NEESON MURCUTT ARCHITECTS PTY LTD  
 11-9 ROBINET PLACE, SYDNEY NSW 2011  
 T: 61 2 9550 9700  
 F: 61 2 9550 9701  
 WWW.NEESONMURCUTT.COM.AU

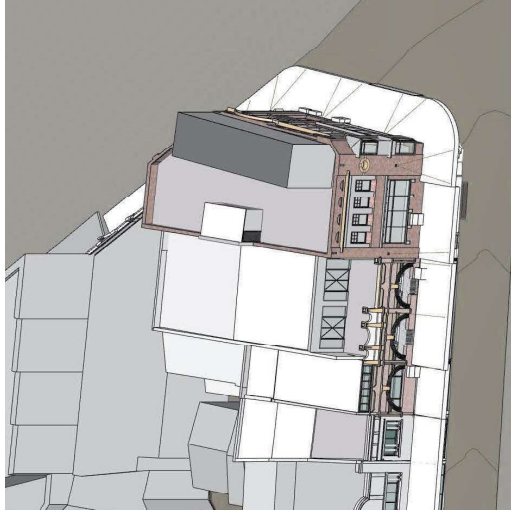
Copyright in all documents and drawings prepared by NEESON MURCUTT ARCHITECTS and in any work executed from those documents and drawings shall remain the property of, or an creation vest in NEESON MURCUTT ARCHITECTS PTY LTD



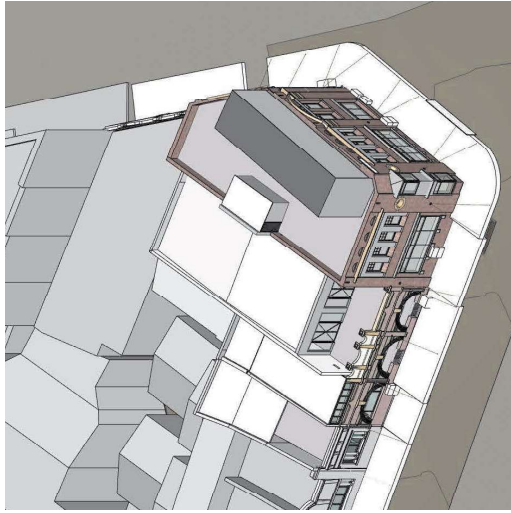
1 APRIL 14 9AM - EXISTING  
1/200



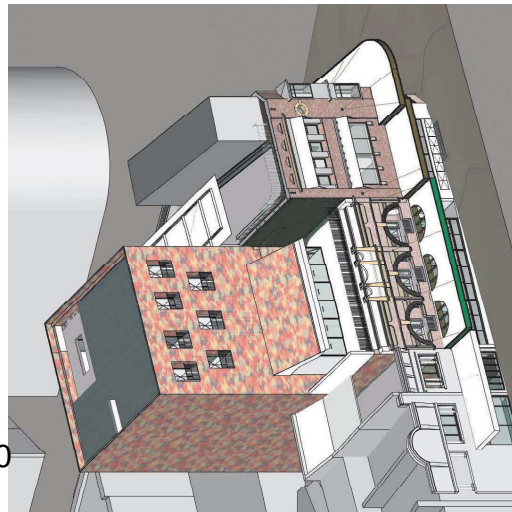
2 APRIL 14 10AM - EXISTING  
1/200



4 APRIL 14 11AM - EXISTING  
1/1250



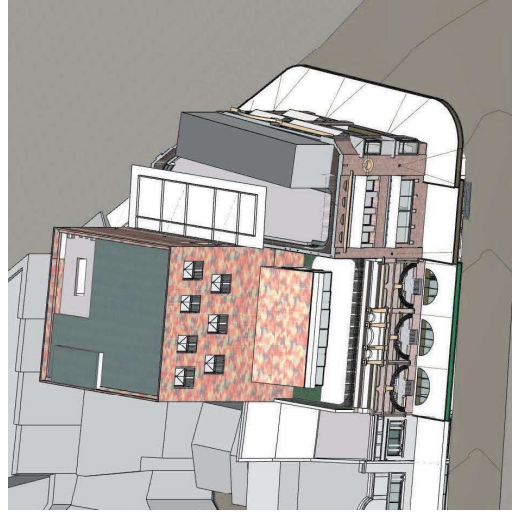
5 APRIL 14 12PM - EXISTING  
1/1250



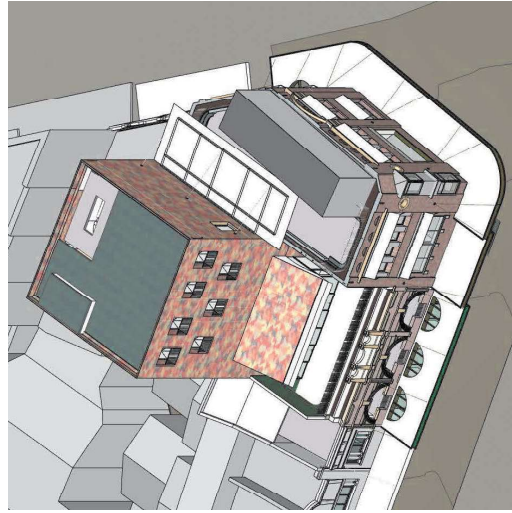
3 APRIL 14 9AM - PROPOSED  
1/200



4 APRIL 14 10AM - PROPOSED  
1/200



7 APRIL 14 11AM - PROPOSED  
1/1250



8 APRIL 14 12PM - PROPOSED  
1/1250

© 2011 NEESON MURCUTT + NEILLE  
11195, 1195-199, 201 Oxford St. Doolittle St. 18th St.  
19th St.  
19th St. East  
19th St. West  
19th St. North  
19th St. South  
19th St. East  
19th St. West  
19th St. North  
19th St. South

DATE: 7/14/22  
SCALE: 8/11  
PHASE: DA

REVISION  
01 7/14/22 DM:ELLE

REVISION  
01 7/14/22 DM:ELLE

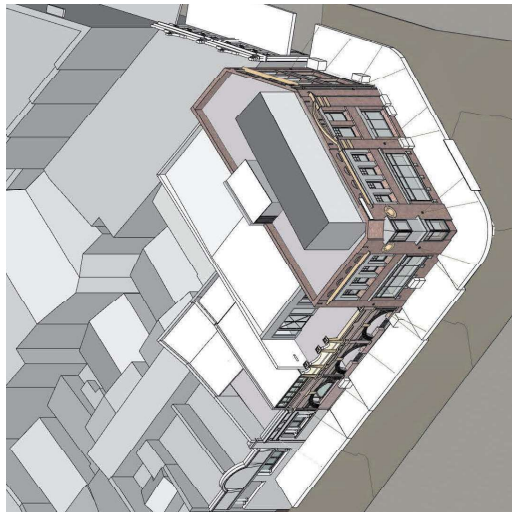
NEESON MURCUTT + NEILLE  
NEESON MURCUTT ARCHITECTS PLY LTD  
11195, 1195-199, 201 Oxford St. Doolittle St. 18th St.  
19th St.  
19th St. East  
19th St. West  
19th St. North  
19th St. South

DA 07/03 01 SOLAR DIAGRAMS APRIL 14 8/11  
DA 7/14/22

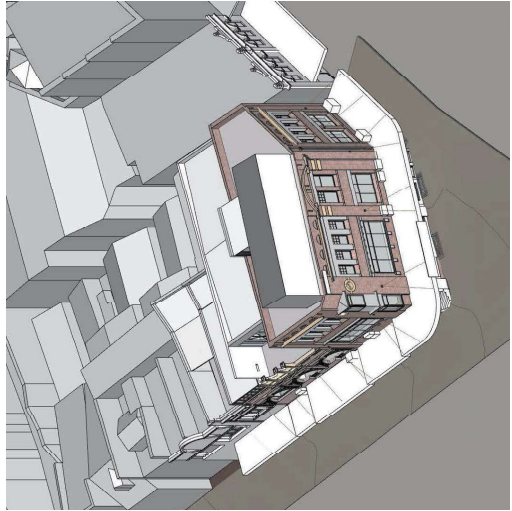
Project: Taylor Square  
Date: 7/14/22  
Scale: 8/11  
Phase: DA

NEESON MURCUTT ARCHITECTS PLY LTD  
11195, 1195-199, 201 Oxford St. Doolittle St. 18th St.  
19th St.  
19th St. East  
19th St. West  
19th St. North  
19th St. South

©



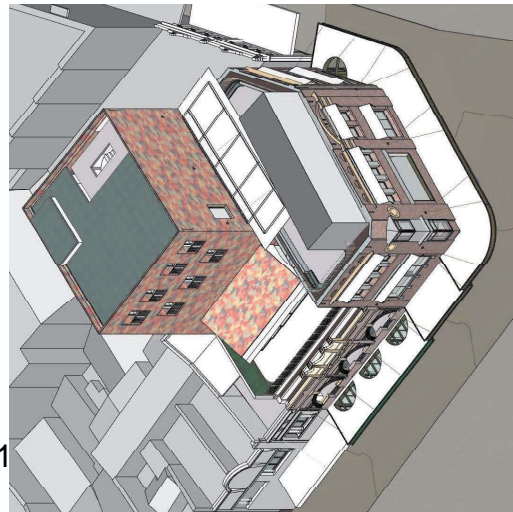
1. APRIL 14 1PM - EXISTING  
1/200



2. APRIL 14 2PM - EXISTING  
1/200



4. APRIL 14 3PM - EXISTING  
1/1250



5. APRIL 14 1PM - PROPOSED  
1/200



3. APRIL 14 2PM - PROPOSED  
1/200



6. APRIL 14 3PM - PROPOSED  
1/1250

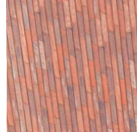
**NEW TOWER**



**FB**  
Face Brick  
Natural Brick Co - Lutyens Brick  
Colour: 7x colours  
Location: New tower cladding



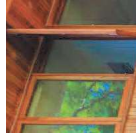
**FBG**  
Face Brick with Glass Bricks  
Location: Behind Level 4 bar



**RF-1**  
Roof Cladding Type 1  
Brick Soffits  
Natural Brick Co - Lutyens  
Colour: 7x colours to match lower facade  
Location: Events Terrace Awning Roof



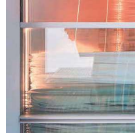
**SP**  
Steel Plate  
Paint Finish  
Location: Rooftop bar awning



**TD / TW**  
Timber framed doors / windows  
Clear finish with clear glass  
Location: Hotel room balconies



**SW**  
Steel framed window  
Clear glass  
Location: Windows to fire stair (sprinklered)



**AD**  
Aluminium framed Doors  
Clear glass  
Location: Sliding doors on level 3 & 4 terraces

**EXISTING BUILDING FACADES**



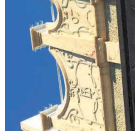
**BE-E**  
Brickwork - existing  
Existing paint stripped  
Location: Existing facades



**SE-E**  
Sandstone - existing  
Rendered & refurbished  
Location: Existing facade ornamentation



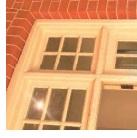
**REN-E**  
Render - existing  
Repaired & painted  
Location: Existing facade ornamentation



**REN-D**  
Render - decorative moulds (existing)  
Repaired & painted  
Location: 197-199 + 201 facade ornamentation



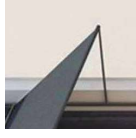
**TP-E**  
Painted timber - existing  
Repaired with new paint finish  
Location: Existing timber cladding & trim



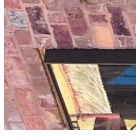
**TD**  
Timber framed doors  
Clear finish with clear glass  
Location: 197-199+201 Level 2 balconies



**TW-E**  
Timber framed windows - existing  
Refurbished, reglazed, painted  
Location: existing windows



**SSH**  
Sunshades - new  
Plate Steel - Paint Finish - protective coating  
Location: Corner building existing windows

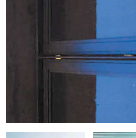


**SW**  
Steel framed window - new  
Clear glass. Paint finish  
Location: Gallery window (new)

**SHOPFRONTS & STREET AWNING**



**REN**  
Render - Smooth Concrete Finish  
Warm colour tint  
Location: Ground floor of 191-195



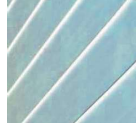
**SW/SD**  
Steel framed windows & doors  
Clear glass. Fluted glass below spanned  
Frame: Paint Finish - protective coating  
Colour: Bronze to 191-195,  
Dark green to 197-199+201  
Location: Ground floor shopfront



**PM**  
Pressed Metal (new)  
Location: Street awning soffit



**SF**  
Steel fascia  
Restored + reconstructed to match exist  
Paint finish - protective coating  
Colour: Bronze to 191-195,  
Dark green to 197-199+201  
Location: Street awning fascia



**RF-2**  
Roof Cladding type 2  
Standing seam - silver  
Location: Street Awning



**HS**  
Steel members  
Paint Finish - protective coating  
Location: Awnings

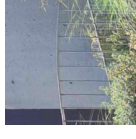


**GSI**  
Glazed skylight  
Clear filtered glass  
Location: Street awning



**CA**  
Canvas Awning  
Restored + fabric replaced  
Location: Edge of street awning

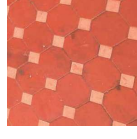
**ROOFTOP + LANDSCAPING ELEMENTS**



**BAL-1**  
Steel Palisade Ballustrade  
Paint Finish - protective coating  
Location: Level 5 + 6 balconies and rooftop terraces



**BAL-2**  
Brick Balustrade  
Refurbished / Reinstated  
Location:  
197-199. Restored & Painted  
201. Reinstated to match 197-199



**TIL**  
Floor Tiles  
Colours to match existing  
Location: 197-199+201 Level 2 balconies



**PAV**  
Pedestal paving - stone  
Location: Rooftop terraces

NO	DESCRIPTION	DATE	BY	CHECKED BY
01	Issue for tender	17/02	JM	JM
02	Issue for tender	17/02	JM	JM
03	Issue for tender	17/02	JM	JM
04	Issue for tender	17/02	JM	JM
05	Issue for tender	17/02	JM	JM
06	Issue for tender	17/02	JM	JM
07	Issue for tender	17/02	JM	JM
08	Issue for tender	17/02	JM	JM
09	Issue for tender	17/02	JM	JM
10	Issue for tender	17/02	JM	JM
11	Issue for tender	17/02	JM	JM
12	Issue for tender	17/02	JM	JM
13	Issue for tender	17/02	JM	JM
14	Issue for tender	17/02	JM	JM
15	Issue for tender	17/02	JM	JM
16	Issue for tender	17/02	JM	JM
17	Issue for tender	17/02	JM	JM
18	Issue for tender	17/02	JM	JM
19	Issue for tender	17/02	JM	JM
20	Issue for tender	17/02	JM	JM
21	Issue for tender	17/02	JM	JM
22	Issue for tender	17/02	JM	JM
23	Issue for tender	17/02	JM	JM
24	Issue for tender	17/02	JM	JM
25	Issue for tender	17/02	JM	JM
26	Issue for tender	17/02	JM	JM
27	Issue for tender	17/02	JM	JM
28	Issue for tender	17/02	JM	JM
29	Issue for tender	17/02	JM	JM
30	Issue for tender	17/02	JM	JM
31	Issue for tender	17/02	JM	JM
32	Issue for tender	17/02	JM	JM
33	Issue for tender	17/02	JM	JM
34	Issue for tender	17/02	JM	JM
35	Issue for tender	17/02	JM	JM
36	Issue for tender	17/02	JM	JM
37	Issue for tender	17/02	JM	JM
38	Issue for tender	17/02	JM	JM
39	Issue for tender	17/02	JM	JM
40	Issue for tender	17/02	JM	JM
41	Issue for tender	17/02	JM	JM
42	Issue for tender	17/02	JM	JM
43	Issue for tender	17/02	JM	JM
44	Issue for tender	17/02	JM	JM
45	Issue for tender	17/02	JM	JM
46	Issue for tender	17/02	JM	JM
47	Issue for tender	17/02	JM	JM
48	Issue for tender	17/02	JM	JM
49	Issue for tender	17/02	JM	JM
50	Issue for tender	17/02	JM	JM
51	Issue for tender	17/02	JM	JM
52	Issue for tender	17/02	JM	JM
53	Issue for tender	17/02	JM	JM
54	Issue for tender	17/02	JM	JM
55	Issue for tender	17/02	JM	JM
56	Issue for tender	17/02	JM	JM
57	Issue for tender	17/02	JM	JM
58	Issue for tender	17/02	JM	JM
59	Issue for tender	17/02	JM	JM
60	Issue for tender	17/02	JM	JM
61	Issue for tender	17/02	JM	JM
62	Issue for tender	17/02	JM	JM
63	Issue for tender	17/02	JM	JM
64	Issue for tender	17/02	JM	JM
65	Issue for tender	17/02	JM	JM
66	Issue for tender	17/02	JM	JM
67	Issue for tender	17/02	JM	JM
68	Issue for tender	17/02	JM	JM
69	Issue for tender	17/02	JM	JM
70	Issue for tender	17/02	JM	JM
71	Issue for tender	17/02	JM	JM
72	Issue for tender	17/02	JM	JM
73	Issue for tender	17/02	JM	JM
74	Issue for tender	17/02	JM	JM
75	Issue for tender	17/02	JM	JM
76	Issue for tender	17/02	JM	JM
77	Issue for tender	17/02	JM	JM
78	Issue for tender	17/02	JM	JM
79	Issue for tender	17/02	JM	JM
80	Issue for tender	17/02	JM	JM
81	Issue for tender	17/02	JM	JM
82	Issue for tender	17/02	JM	JM
83	Issue for tender	17/02	JM	JM
84	Issue for tender	17/02	JM	JM
85	Issue for tender	17/02	JM	JM
86	Issue for tender	17/02	JM	JM
87	Issue for tender	17/02	JM	JM
88	Issue for tender	17/02	JM	JM
89	Issue for tender	17/02	JM	JM
90	Issue for tender	17/02	JM	JM
91	Issue for tender	17/02	JM	JM
92	Issue for tender	17/02	JM	JM
93	Issue for tender	17/02	JM	JM
94	Issue for tender	17/02	JM	JM
95	Issue for tender	17/02	JM	JM
96	Issue for tender	17/02	JM	JM
97	Issue for tender	17/02	JM	JM
98	Issue for tender	17/02	JM	JM
99	Issue for tender	17/02	JM	JM
100	Issue for tender	17/02	JM	JM



2 Photomontage with trees  
12/20



4 Photomontage without trees  
12/20



1 Existing Photo  
12/20



3 Wireframe montage  
12/20

- design with minimum structural mass
- design with least steel volume
- design with a minimum surface area
- design with the most interior volume
- design with the most exterior volume
- design with the most exterior volume
- design with the most exterior volume
- design with the most exterior volume
- design with the most exterior volume

**LEGEND**

Color	Description
Black	Existing (non-wood)
Light Blue	Proposed (non-wood)
Dark Blue	Proposed (wood)
Light Green	Proposed (glass)
Light Yellow	Proposed (stone)

**Taylor Square**  
 11 9 10 11 12 13 14 15 16 17 18 19 20 21 22 23 24 25 26 27 28 29 30 31 32 33 34 35 36 37 38 39 40 41 42 43 44 45 46 47 48 49 50 51 52 53 54 55 56 57 58 59 60 61 62 63 64 65 66 67 68 69 70 71 72 73 74 75 76 77 78 79 80 81 82 83 84 85 86 87 88 89 90 91 92 93 94 95 96 97 98 99 100

**NEESON MURCUTT + NEILLE**  
 NEESON MURCUTT ARCHITECTS PTY LTD  
 11 9 10 11 12 13 14 15 16 17 18 19 20 21 22 23 24 25 26 27 28 29 30 31 32 33 34 35 36 37 38 39 40 41 42 43 44 45 46 47 48 49 50 51 52 53 54 55 56 57 58 59 60 61 62 63 64 65 66 67 68 69 70 71 72 73 74 75 76 77 78 79 80 81 82 83 84 85 86 87 88 89 90 91 92 93 94 95 96 97 98 99 100  
 11 9 10 11 12 13 14 15 16 17 18 19 20 21 22 23 24 25 26 27 28 29 30 31 32 33 34 35 36 37 38 39 40 41 42 43 44 45 46 47 48 49 50 51 52 53 54 55 56 57 58 59 60 61 62 63 64 65 66 67 68 69 70 71 72 73 74 75 76 77 78 79 80 81 82 83 84 85 86 87 88 89 90 91 92 93 94 95 96 97 98 99 100  
 11 9 10 11 12 13 14 15 16 17 18 19 20 21 22 23 24 25 26 27 28 29 30 31 32 33 34 35 36 37 38 39 40 41 42 43 44 45 46 47 48 49 50 51 52 53 54 55 56 57 58 59 60 61 62 63 64 65 66 67 68 69 70 71 72 73 74 75 76 77 78 79 80 81 82 83 84 85 86 87 88 89 90 91 92 93 94 95 96 97 98 99 100

DRAWN BY: **NO. 34 CHECKED BY:**  
 DATE: **7/4/20**  
 SCALE: **80A1**  
 PROJECT: **PHOTOMONTAGE 1**  
 DRAWING NO: **DA 09 02 01**



2. Photomontage with trees  
12.23



4. Photomontage without trees  
12.23



1. Existing Photo  
12.23



3. Wireframe montage  
12.23

USING:  
 A20 - 40' CLEARANCE  
 A21 - 40' CLEARANCE  
 A22 - 40' CLEARANCE  
 A23 - 40' CLEARANCE  
 A24 - 40' CLEARANCE  
 A25 - 40' CLEARANCE  
 A26 - 40' CLEARANCE  
 A27 - 40' CLEARANCE  
 A28 - 40' CLEARANCE  
 A29 - 40' CLEARANCE  
 A30 - 40' CLEARANCE  
 A31 - 40' CLEARANCE  
 A32 - 40' CLEARANCE  
 A33 - 40' CLEARANCE  
 A34 - 40' CLEARANCE  
 A35 - 40' CLEARANCE  
 A36 - 40' CLEARANCE  
 A37 - 40' CLEARANCE  
 A38 - 40' CLEARANCE  
 A39 - 40' CLEARANCE  
 A40 - 40' CLEARANCE  
 A41 - 40' CLEARANCE  
 A42 - 40' CLEARANCE  
 A43 - 40' CLEARANCE  
 A44 - 40' CLEARANCE  
 A45 - 40' CLEARANCE  
 A46 - 40' CLEARANCE  
 A47 - 40' CLEARANCE  
 A48 - 40' CLEARANCE  
 A49 - 40' CLEARANCE  
 A50 - 40' CLEARANCE  
 A51 - 40' CLEARANCE  
 A52 - 40' CLEARANCE  
 A53 - 40' CLEARANCE  
 A54 - 40' CLEARANCE  
 A55 - 40' CLEARANCE  
 A56 - 40' CLEARANCE  
 A57 - 40' CLEARANCE  
 A58 - 40' CLEARANCE  
 A59 - 40' CLEARANCE  
 A60 - 40' CLEARANCE  
 A61 - 40' CLEARANCE  
 A62 - 40' CLEARANCE  
 A63 - 40' CLEARANCE  
 A64 - 40' CLEARANCE  
 A65 - 40' CLEARANCE  
 A66 - 40' CLEARANCE  
 A67 - 40' CLEARANCE  
 A68 - 40' CLEARANCE  
 A69 - 40' CLEARANCE  
 A70 - 40' CLEARANCE  
 A71 - 40' CLEARANCE  
 A72 - 40' CLEARANCE  
 A73 - 40' CLEARANCE  
 A74 - 40' CLEARANCE  
 A75 - 40' CLEARANCE  
 A76 - 40' CLEARANCE  
 A77 - 40' CLEARANCE  
 A78 - 40' CLEARANCE  
 A79 - 40' CLEARANCE  
 A80 - 40' CLEARANCE  
 A81 - 40' CLEARANCE  
 A82 - 40' CLEARANCE  
 A83 - 40' CLEARANCE  
 A84 - 40' CLEARANCE  
 A85 - 40' CLEARANCE  
 A86 - 40' CLEARANCE  
 A87 - 40' CLEARANCE  
 A88 - 40' CLEARANCE  
 A89 - 40' CLEARANCE  
 A90 - 40' CLEARANCE  
 A91 - 40' CLEARANCE  
 A92 - 40' CLEARANCE  
 A93 - 40' CLEARANCE  
 A94 - 40' CLEARANCE  
 A95 - 40' CLEARANCE  
 A96 - 40' CLEARANCE  
 A97 - 40' CLEARANCE  
 A98 - 40' CLEARANCE  
 A99 - 40' CLEARANCE  
 A100 - 40' CLEARANCE

USING:  
 10' - 10' CLEARANCE  
 11' - 11' CLEARANCE  
 12' - 12' CLEARANCE  
 13' - 13' CLEARANCE  
 14' - 14' CLEARANCE  
 15' - 15' CLEARANCE  
 16' - 16' CLEARANCE  
 17' - 17' CLEARANCE  
 18' - 18' CLEARANCE  
 19' - 19' CLEARANCE  
 20' - 20' CLEARANCE  
 21' - 21' CLEARANCE  
 22' - 22' CLEARANCE  
 23' - 23' CLEARANCE  
 24' - 24' CLEARANCE  
 25' - 25' CLEARANCE  
 26' - 26' CLEARANCE  
 27' - 27' CLEARANCE  
 28' - 28' CLEARANCE  
 29' - 29' CLEARANCE  
 30' - 30' CLEARANCE  
 31' - 31' CLEARANCE  
 32' - 32' CLEARANCE  
 33' - 33' CLEARANCE  
 34' - 34' CLEARANCE  
 35' - 35' CLEARANCE  
 36' - 36' CLEARANCE  
 37' - 37' CLEARANCE  
 38' - 38' CLEARANCE  
 39' - 39' CLEARANCE  
 40' - 40' CLEARANCE  
 41' - 41' CLEARANCE  
 42' - 42' CLEARANCE  
 43' - 43' CLEARANCE  
 44' - 44' CLEARANCE  
 45' - 45' CLEARANCE  
 46' - 46' CLEARANCE  
 47' - 47' CLEARANCE  
 48' - 48' CLEARANCE  
 49' - 49' CLEARANCE  
 50' - 50' CLEARANCE  
 51' - 51' CLEARANCE  
 52' - 52' CLEARANCE  
 53' - 53' CLEARANCE  
 54' - 54' CLEARANCE  
 55' - 55' CLEARANCE  
 56' - 56' CLEARANCE  
 57' - 57' CLEARANCE  
 58' - 58' CLEARANCE  
 59' - 59' CLEARANCE  
 60' - 60' CLEARANCE  
 61' - 61' CLEARANCE  
 62' - 62' CLEARANCE  
 63' - 63' CLEARANCE  
 64' - 64' CLEARANCE  
 65' - 65' CLEARANCE  
 66' - 66' CLEARANCE  
 67' - 67' CLEARANCE  
 68' - 68' CLEARANCE  
 69' - 69' CLEARANCE  
 70' - 70' CLEARANCE  
 71' - 71' CLEARANCE  
 72' - 72' CLEARANCE  
 73' - 73' CLEARANCE  
 74' - 74' CLEARANCE  
 75' - 75' CLEARANCE  
 76' - 76' CLEARANCE  
 77' - 77' CLEARANCE  
 78' - 78' CLEARANCE  
 79' - 79' CLEARANCE  
 80' - 80' CLEARANCE  
 81' - 81' CLEARANCE  
 82' - 82' CLEARANCE  
 83' - 83' CLEARANCE  
 84' - 84' CLEARANCE  
 85' - 85' CLEARANCE  
 86' - 86' CLEARANCE  
 87' - 87' CLEARANCE  
 88' - 88' CLEARANCE  
 89' - 89' CLEARANCE  
 90' - 90' CLEARANCE  
 91' - 91' CLEARANCE  
 92' - 92' CLEARANCE  
 93' - 93' CLEARANCE  
 94' - 94' CLEARANCE  
 95' - 95' CLEARANCE  
 96' - 96' CLEARANCE  
 97' - 97' CLEARANCE  
 98' - 98' CLEARANCE  
 99' - 99' CLEARANCE  
 100' - 100' CLEARANCE

USING:  
 10' - 10' CLEARANCE  
 11' - 11' CLEARANCE  
 12' - 12' CLEARANCE  
 13' - 13' CLEARANCE  
 14' - 14' CLEARANCE  
 15' - 15' CLEARANCE  
 16' - 16' CLEARANCE  
 17' - 17' CLEARANCE  
 18' - 18' CLEARANCE  
 19' - 19' CLEARANCE  
 20' - 20' CLEARANCE  
 21' - 21' CLEARANCE  
 22' - 22' CLEARANCE  
 23' - 23' CLEARANCE  
 24' - 24' CLEARANCE  
 25' - 25' CLEARANCE  
 26' - 26' CLEARANCE  
 27' - 27' CLEARANCE  
 28' - 28' CLEARANCE  
 29' - 29' CLEARANCE  
 30' - 30' CLEARANCE  
 31' - 31' CLEARANCE  
 32' - 32' CLEARANCE  
 33' - 33' CLEARANCE  
 34' - 34' CLEARANCE  
 35' - 35' CLEARANCE  
 36' - 36' CLEARANCE  
 37' - 37' CLEARANCE  
 38' - 38' CLEARANCE  
 39' - 39' CLEARANCE  
 40' - 40' CLEARANCE  
 41' - 41' CLEARANCE  
 42' - 42' CLEARANCE  
 43' - 43' CLEARANCE  
 44' - 44' CLEARANCE  
 45' - 45' CLEARANCE  
 46' - 46' CLEARANCE  
 47' - 47' CLEARANCE  
 48' - 48' CLEARANCE  
 49' - 49' CLEARANCE  
 50' - 50' CLEARANCE  
 51' - 51' CLEARANCE  
 52' - 52' CLEARANCE  
 53' - 53' CLEARANCE  
 54' - 54' CLEARANCE  
 55' - 55' CLEARANCE  
 56' - 56' CLEARANCE  
 57' - 57' CLEARANCE  
 58' - 58' CLEARANCE  
 59' - 59' CLEARANCE  
 60' - 60' CLEARANCE  
 61' - 61' CLEARANCE  
 62' - 62' CLEARANCE  
 63' - 63' CLEARANCE  
 64' - 64' CLEARANCE  
 65' - 65' CLEARANCE  
 66' - 66' CLEARANCE  
 67' - 67' CLEARANCE  
 68' - 68' CLEARANCE  
 69' - 69' CLEARANCE  
 70' - 70' CLEARANCE  
 71' - 71' CLEARANCE  
 72' - 72' CLEARANCE  
 73' - 73' CLEARANCE  
 74' - 74' CLEARANCE  
 75' - 75' CLEARANCE  
 76' - 76' CLEARANCE  
 77' - 77' CLEARANCE  
 78' - 78' CLEARANCE  
 79' - 79' CLEARANCE  
 80' - 80' CLEARANCE  
 81' - 81' CLEARANCE  
 82' - 82' CLEARANCE  
 83' - 83' CLEARANCE  
 84' - 84' CLEARANCE  
 85' - 85' CLEARANCE  
 86' - 86' CLEARANCE  
 87' - 87' CLEARANCE  
 88' - 88' CLEARANCE  
 89' - 89' CLEARANCE  
 90' - 90' CLEARANCE  
 91' - 91' CLEARANCE  
 92' - 92' CLEARANCE  
 93' - 93' CLEARANCE  
 94' - 94' CLEARANCE  
 95' - 95' CLEARANCE  
 96' - 96' CLEARANCE  
 97' - 97' CLEARANCE  
 98' - 98' CLEARANCE  
 99' - 99' CLEARANCE  
 100' - 100' CLEARANCE

**Issue** DATE REVIEWER  
 01 7/4/22 DM,ELLE

**Designer** NEESON MURCUTT + NEILLE  
 11 9 POINTS PLACE PTST 2011 T 8203 870  
 120000 ARCHITECT ARCHITECT NEESON NO. 602

**Client** re-Save the Robots

**Project** PHOTOMONTAGE 2

**Phase** DA

**Scale** 80A1

**Date** 7/4/22

Copyright in all documents and drawings prepared by NEESON MURCUTT ARCHITECTS and in any work executed from those documents and drawings shall remain the property of, or an creation of, NEESON MURCUTT ARCHITECTS, Pty Ltd

**DRAWN BY** JM, CHECKED BY -  
 FILED BY JAL, CHECKED BY JANE CONNOR APPROVED UNDER NMA QUALITY MANAGEMENT SYSTEM





3 Photomontage with trees



2 Existing Photo



4 Wireframe montage

© 2018 by NEESON MURCUTT + NEILLE  
 1195 PICTURE STREET, SUITE 100, VANCOUVER, BC V6C 2H1  
 TEL: 604.681.3333  
 WWW.NEESONMURCUTT.COM

100%  
 75%  
 50%  
 25%  
 0%  
 100%  
 75%  
 50%  
 25%  
 0%

100%  
 75%  
 50%  
 25%  
 0%

100%  
 75%  
 50%  
 25%  
 0%

100%  
 75%  
 50%  
 25%  
 0%

100%  
 75%  
 50%  
 25%  
 0%

ISSUE DATE: 7/4/22  
 DRAWN BY: JIM CHECKED BY:

**Taylor Square**  
 191-195, 197-199, 201, Oxford St, Duffinplaza 16th, 20th  
 VANCOUVER, BC V6C 2H1  
 TEL: 604.681.3333  
 WWW.NEESONMURCUTT.COM

NEESON MURCUTT + NEILLE  
 NEESON MURCUTT ARCHITECTS PRTY LTD  
 1195 PICTURE STREET, SUITE 100, VANCOUVER, BC V6C 2H1  
 TEL: 604.681.3333  
 WWW.NEESONMURCUTT.COM

PROJECT NO: 2018-001  
 PHASE: DA  
 SCALE: 8/1  
 DATE: 7/4/22

Copyright in all documents and drawings prepared by NEESON MURCUTT ARCHITECTS and in any work executed from those documents and drawings shall remain the property of, or an creation vest in, NEESON MURCUTT ARCHITECTS, PRTY LTD.